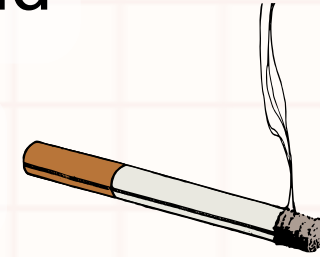


What are the risk factors of lung?

Lung cancer is the random and uncontrolled growth and proliferation of cancerous cells, and **smoking** is often the **main cause of lung cancer**.



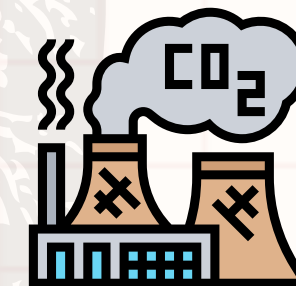
Exposure to radon gas through its high concentration



Passive smoking caused by inhaling air with smokers



family history of lung cancer



Air pollution from vehicle exhaust, industrial emissions.

For more information
scan QR code



World Lung Day
1 August

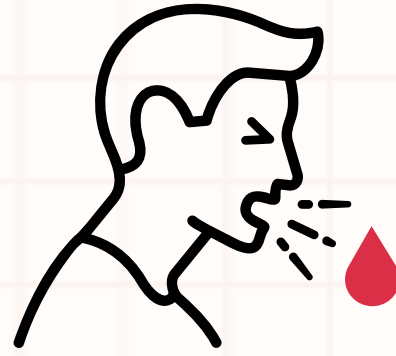


جامعة الإمام عبد الرحمن بن فيصل
IMAM ABDULRAHMAN BIN FAISAL UNIVERSITY

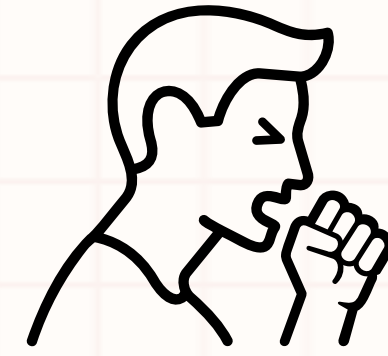
المدينة الطبية الأكاديمية | IAU . AMC

مستشفى الملك فهد الجامعي
King Fahd University Hospital

What are the symptoms of lung cancer?



Bloody cough



Persistent cough



Paleness and emaciation



Hoarseness



Shortness of breath



Chest and shoulder pain

For more information
scan QR code



وحدة التوعية الصحية
Health Awareness Unit