



جامعة الإمام عبد الرحمن بن فيصل
IMAM ABDULRAHMAN BIN FAISAL UNIVERSITY

مستشفى الملك فهد الجامعي
King Fahad Hospital The University

Eyelid Ptosis



What is eyelid ptosis?

Eyelid ptosis is an abnormal eyelid position where it will be below the normal level and might cover part of the cornea and in some cases, it can occlude the vision.

Eyelid ptosis can affect one or both eyelids with a variable amount depending on the underlying cause.



What are the causes of eyelid ptosis ?

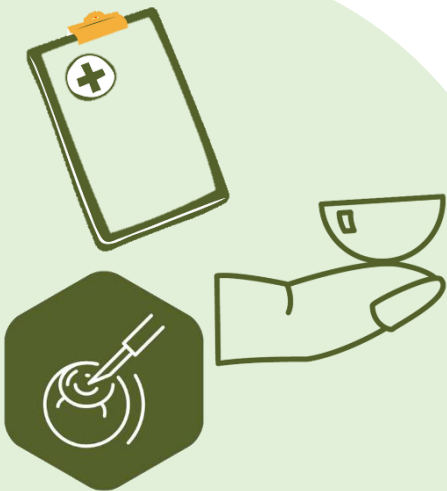
Congenital ptosis: it usually presents at birth

It might be because of abnormal eyelid muscle or it could be hereditary.



What are the causes of eyelid ptosis ?

- **Acquired ptosis:** usually presents later in adolescence or adulthood secondary to an abnormality in eyelid muscle, tendon, or its nerve supply
- There are multiple causes including:
- Aging
- Eyelid rubbing
- Uses of hard contact lenses
- Previous eye surgery (phacoemulsification)
- Eyelid trauma



What are the causes of eyelid ptosis ?

- Eyelid swelling or masses
- Myasthenia graves and other muscle dystrophies
- Horner syndrome
- Paralysis of third cranial nerve
- Botox injection therapeutic or cosmetic.



What are the symptoms of eyelid ptosis?

The main symptom of eyelid ptosis is the abnormally lower than normal eyelid position, in mild cases, it might be unnoticeable while in severe cases it can occlude the visual axis especially in downgaze or while reading, and it can induce amblyopia in pediatrics

Distance between upper lid margin and corneal light reflex



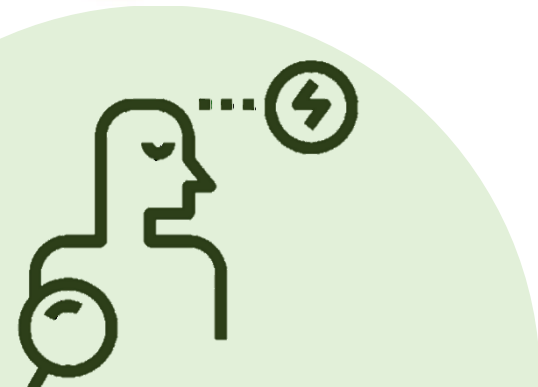
Mild ptosis 2mm



Moderate ptosis 3mm



Severe Ptosis 4mm or more



What is the treatment of eyelid ptosis?

Treatment usually depends on the **degree** and **cause** of ptosis which is determined during the clinical examination

In mild cases, usually no treatment is needed,

in advanced cases that affect the vision or cause

disfigurement, it needs treatment either for cosmetic or

to restore vision and prevent amblyopia.



What is the treatment of eyelid ptosis?

Ptosis is usually treated surgically by strengthening the muscle or re-fixing its tendon, and in **severe ptosis**, a sling is used to elevate the eyelid to a normal position. In cases of post Botox ptosis, it is usually improved spontaneously and in some cases, eye drops can be used to restore the normal eyelid position.



What are the possible risks after ptosis surgery?

- Under and overcorrection, in these cases, the eyelid might be below or above the intended normal position.
- Incomplete eyelid closure that can cause dryness of the ocular surface.
- Asymmetrical eyelid contour.
- Abnormal eyelid movement, the eyelid will be retracted in downgaze.
- Dryness of ocular surface and corneal ulcer.



Sources and references:

[Congenital Ptosis. EyeRounds.org - Ophthalmology - The University of Iowa](#)
([uiowa.edu](#))

[File:Acquired Aponeurotic Ptosis.jpeg](#) © 2020 American Academy of
Ophthalmology

[Grading In Ophthalmology - Eye Health Nepal](#)

Review and audit

The content of this booklet was written and reviewed by Ophthalmology
consultants at King Fahd University Hospital

Ophthalmology Department

Health Awareness Unit

IAU-22-280



جامعة الإمام عبد الرحمن بن فيصل
IMAM ABDULRAHMAN BIN FAISAL UNIVERSITY

مستشفى الملك فهد الجامعي
King Fahad Hospital The University