



جامعة الإمام عبد الرحمن بن فيصل
IMAM ABDULRAHMAN BIN FAISAL UNIVERSITY

مستشفى الملك فهد الجامعي
King Fahad Hospital The University

Breast Surgery Instructions



How is Breast Surgery diagnosis?

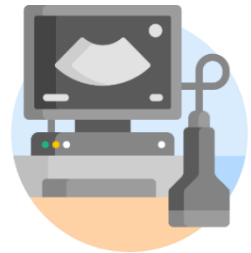
- The physician checks the breast externally to see if there are any changes.



- Recommends mammogram imaging for the breast to know the internal details for the age group +30 years old.



- Recommends ultrasound for checking the breast internal changes for patients under 30 years old.



What is Biopsy?



A sample taken under local anesthesia to check a tissue or a cell by a microscope.

What should I expect before the breast surgery?

The physician presents a sufficient comment about the process



The patient or her watcher signs the approval for running the surgical procedures.



It is recommended to keep the patient fasting for (6) hours before the surgery.



What should I expect after the breast surgery?

- To have a watcher with you to take you back home.



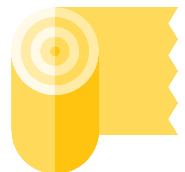
- To have wide clothes to be easy for putting on when back home.



- Discomfort at the surgical site is normal.



- Surgical site will be covered by an adhesive band, please do not remove it for 24 hrs. and follow your doctor instructions



What are homecare instructions?

- Keep the surgery site clean and dry.



- You can have a shower on the next day after the surgery with keeping the wound open.



- After having the shower dry the surgical site without moving the adhesive band.



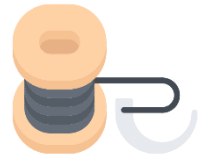


Is there any clinic appointment?

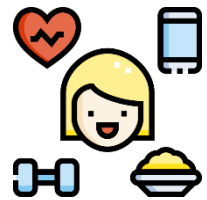
- An appointment will be assigned after one week to see the surgical site and the result.



- In case there are any stitches the removal will be according to the surgery case.



- You could practice your normal activities according to the attending physician recommendations.



When should I visit emergency room?

- Pains irresponsive to sedative medications.



- Bleeding or increased swelling at the surgical procedure site.



- Redness around the surgical procedure site.



- An abscess or a bad odor from surgical procedure site.



- Developing an allergy to any medicine you have been given in the hospital.



Sources and references

All pictures used are from Flaticon.com

Review and audit:

The content of this booklet has been reviewed by
consultants of the breast Surgery department at King Fahad
University Hospital

Health Awareness Unit

IAU-20-90



جامعة الإمام عبد الرحمن بن فيصل
IMAM ABDULRAHMAN BIN FAISAL UNIVERSITY

مستشفى الملك فهد الجامعي
King Fahad Hospital The University